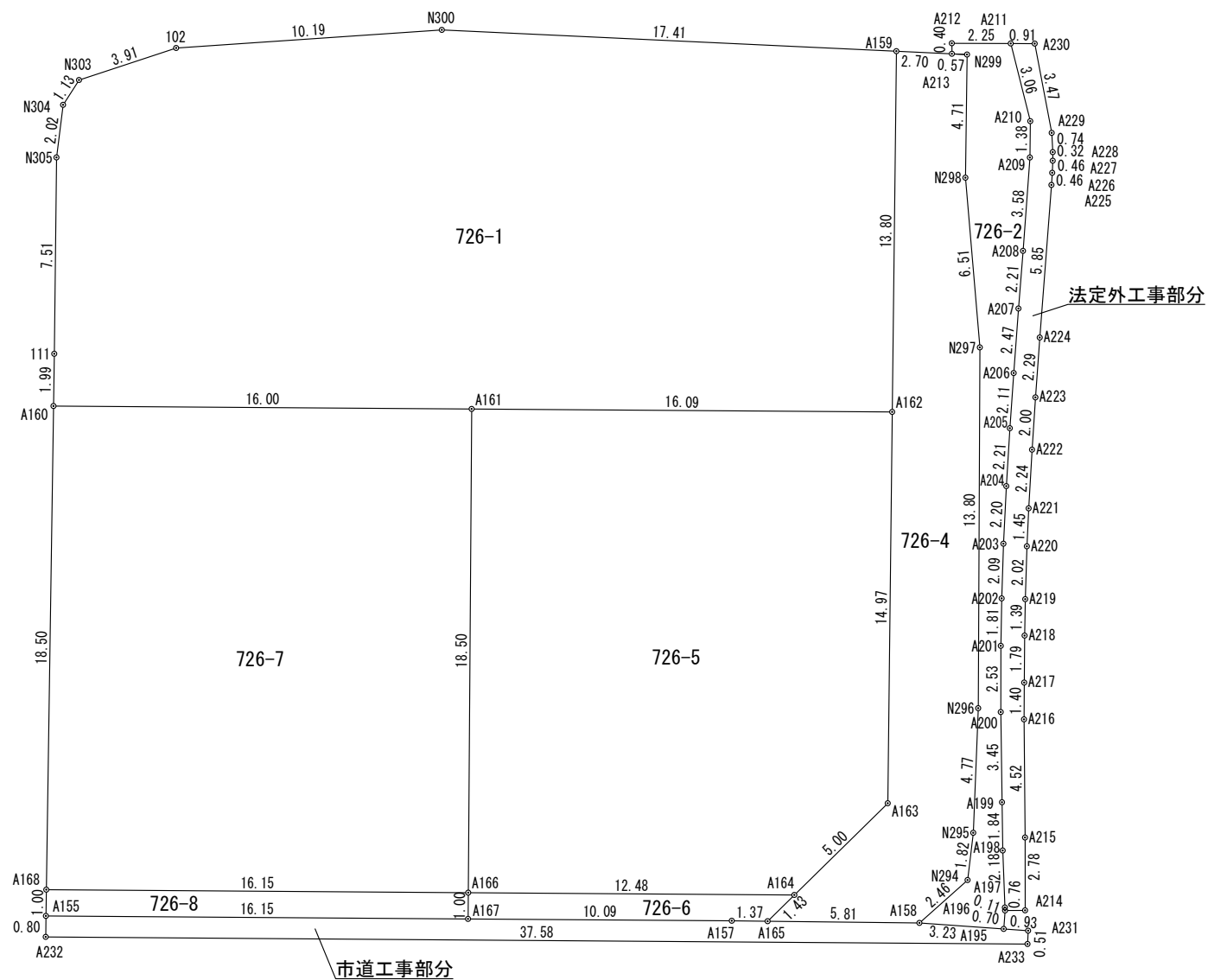


# 丈量図



座標求積表

地番	726-1		
測点	Xn	Yn	(Xn+1 - Xn-1) Yn
A159	146527.870	46330.537	805641.707893
N300	146531.694	46313.546	227306.883768
102	146532.778	46303.410	24170.380020
N303	146532.216	46299.538	-64448.956896
N304	146531.386	46298.771	-128108.699357
N305	146529.449	46298.173	-431498.972360
111	146522.066	46296.784	-432689.743264
A160	146520.103	46296.408	-224722.764432
A161	146517.212	46312.151	-268517.851498
A162	146514.305	46327.985	493763.664130
			倍面積 895.648004
			面積 447.8240020
			地積 447.82 m <sup>2</sup>

地番	726-2		
測点	Xn	Yn	(Xn+1 - Xn-1) Yn
A158	146494.872	46325.615	-96542.581660
A195	146494.085	46328.753	-4586.546547
A196	146494.773	46328.925	37109.468925
A197	146494.886	46328.939	105398.336225
A198	146497.048	46329.236	184529.346988
A199	146498.869	46329.530	242257.112370
A200	146502.277	46330.081	273440.138062
A201	146504.771	46330.523	198109.316348
A202	146506.553	46330.871	177400.905059
A203	146508.600	46331.302	194545.137098
A204	146510.752	46331.792	199690.023520
A205	146512.910	46332.309	195198.017817
A206	146514.965	46332.822	206273.723544
A207	146517.362	46333.429	210261.100802
A208	146519.503	46333.985	260165.325775
A209	146522.977	46334.863	224214.402057
A210	146524.342	46335.121	204940.240183
A211	146527.400	46334.899	160179.745843
A212	146527.799	46332.680	92.665360
A213	146527.402	46332.614	-24278.289736
N299	146527.275	46333.179	-220499.598861
N298	146522.643	46332.299	-515307.829478
N297	146516.153	46331.716	-929877.540120
N296	146502.573	46329.258	-845138.324436
N295	146497.911	46328.243	-296686.068172
N294	146496.169	46327.715	-140789.925885
			倍面積 98.301081
			面積 49.1505405
			地積 49.15 m <sup>2</sup>

地番	726-4		
測点	Xn	Yn	(Xn+1 - Xn-1) Yn
N299	146527.275	46333.179	242183.526633
A159	146527.870	46330.537	-600907.064890
A162	146514.305	46327.985	-1310062.759830
A163	146499.592	46325.216	-812868.565152
A164	146496.758	46321.086	-168840.358470
A165	146495.947	46319.905	-87359.340830
A158	146494.872	46325.615	10284.286530
N294	146496.169	46327.715	140789.925885
N295	146497.911	46328.243	296686.068172
N296	146502.573	46329.258	845138.324436
N297	146516.153	46331.716	929877.540120
N298	146522.643	46332.299	515307.829478
			倍面積 229.412082
			面積 114.7060410
			地積 114.70 m <sup>2</sup>

地番	726-5		
測点	Xn	Yn	(Xn+1 - Xn-1) Yn
A162	146514.305	46327.985	816299.095700
A161	146517.212	46312.151	-708251.725243
A166	146499.012	46308.809	-947200.379286
A164	146496.758	46321.086	26866.229880
A163	146499.592	46325.216	812868.565152
			倍面積 581.786203
			面積 290.8931015
			地積 290.89 m <sup>2</sup>

地番	726-6		
測点	Xn	Yn	(Xn+1 - Xn-1) Yn
A164	146496.758	46321.086	141974.128590
A166	146499.012	46308.809	58580.643385
A167	146498.023	46308.627	-130219.859124
A157	146496.200	46318.557	-96157.324332
A165	146495.947	46319.905	25846.506990
			倍面積 24.095509
			面積 12.0477545
			地積 12.04 m <sup>2</sup>

地番	726-7		
測点	Xn	Yn	(Xn+1 - Xn-1) Yn
A161	146517.212	46312.151	976769.576741
A160	146520.103	46296.408	-707594.299872
A168	146501.928	46292.923	-976364.038993
A166	146499.012	46308.809	707783.836756
			倍面積 595.074632
			面積 297.5373160
			地積 297.53 m <sup>2</sup>

地番	726-8		
測点	Xn	Yn	(Xn+1 - Xn-1) Yn
A166	146499.012	46308.809	180835.899145
A168	146501.928	46292.923	89299.048467
A155	146500.941	46292.734	-180773.126270
A167	146498.023	46308.627	-89329.341483
			倍面積 32.479859
			面積 16.2399295
			地積 16.23 m <sup>2</sup>

地番	法定外工事部分		
測点	Xn	Yn	(Xn+1 - Xn-1) Yn
A196	146494.773	46328.925	-11257.928775
A214	146494.643	46329.682	121244.777794
A215	146497.390	46330.164	333808.831620
A216	146501.848	46330.911	270618.851151
A217	146503.231	46331.163	145989.494613
A218	146504.999	46331.488	145295.546368
A219	146506.367	46331.755	155165.047495
A220	146508.348	46332.167	157483.035633
A221	146509.766	46332.487	167121.280609
A222	146511.955	46333.005	191540.642670
A223	146513.900	46333.480	193303.278560
A224	146516.127	46334.039	365992.574061
A225	146521.799	46335.494	283804.900750
A226	146522.252	46335.605	41887.386920
A227	146522.703	46335.703	35817.498419
A228	146523.025	46335.762	48976.900434
A229	146523.760	46335.851	195120.268561
A230	146527.236	46335.803	168662.322920
A211	146527.400	46334.899	-134093.197706
A210	146524.342	46335.121	-204940.240183
A209	146522.977	46334.863	-224214.402057
A208	146519.503	46333.985	-260165.325775
A207	146517.362	46333.429	-210261.100802
A206	146514.965	46332.822	-206273.723544
A205	146512.910	46332.309	-195198.017817
A204	146510.752	46331.792	-199690.023520
A203	146508.600	46331.302	-194545.137098
A202	146506.553	46330.871	-177400.905059
A201	146504.771	46330.523	-198109.316348
A200	146502.277	46330.081	-273440.138062
A199	146498.869	46329.530	-242257.112370
A198	146497.048	46329.236	-184529.346988
A197	146494.886	46328.939	-105398.336225
			倍面積 58.386249
			面積 29.1931245
			地積 29.19 m <sup>2</sup>

地番	市道工事部分		
測点	Xn	Yn	(Xn+1 - Xn-1) Yn
A231	146493.857	46329.661	33635.333886
A195	146494.085	46328.753	47023.684295
A158	146494.872	46325.615	86258.295130
A165	146495.947	46319.905	61512.833840
A157	146496.200	46318.557	96157.324332
A167	146498.023	46308.627	219549.200607
A155	146500.941	46292.734	98649.816154
A232	146500.154	46292.588	-350990.402216
A233	146493.359	46329.551	-291737.182647
			倍面積 58.903381
			面積 29.4516905
			地積 29.45 m <sup>2</sup>

合計 1287.0435000

土地の所在	高松市飯田町字西青木	縮尺	1 / 250	測量年月日	令和 年 月 日	特記事項	作製者	石井登記測量事務所 土地家屋調査士 石井敦雄 高松市春日町 1643-9 電話 843-3131
土地の地番	726-1、726-5~726-8			図面番号	作製年月日			