

丈量図 1

宅地面積	4989.14m ²
開発道路面積	1514.22m ²
公園面積	204.88m ²
代替農道水面積	58.57m ²
開発面積	6766.81m ²

【変更後】

縮尺400分の1

座標求積表

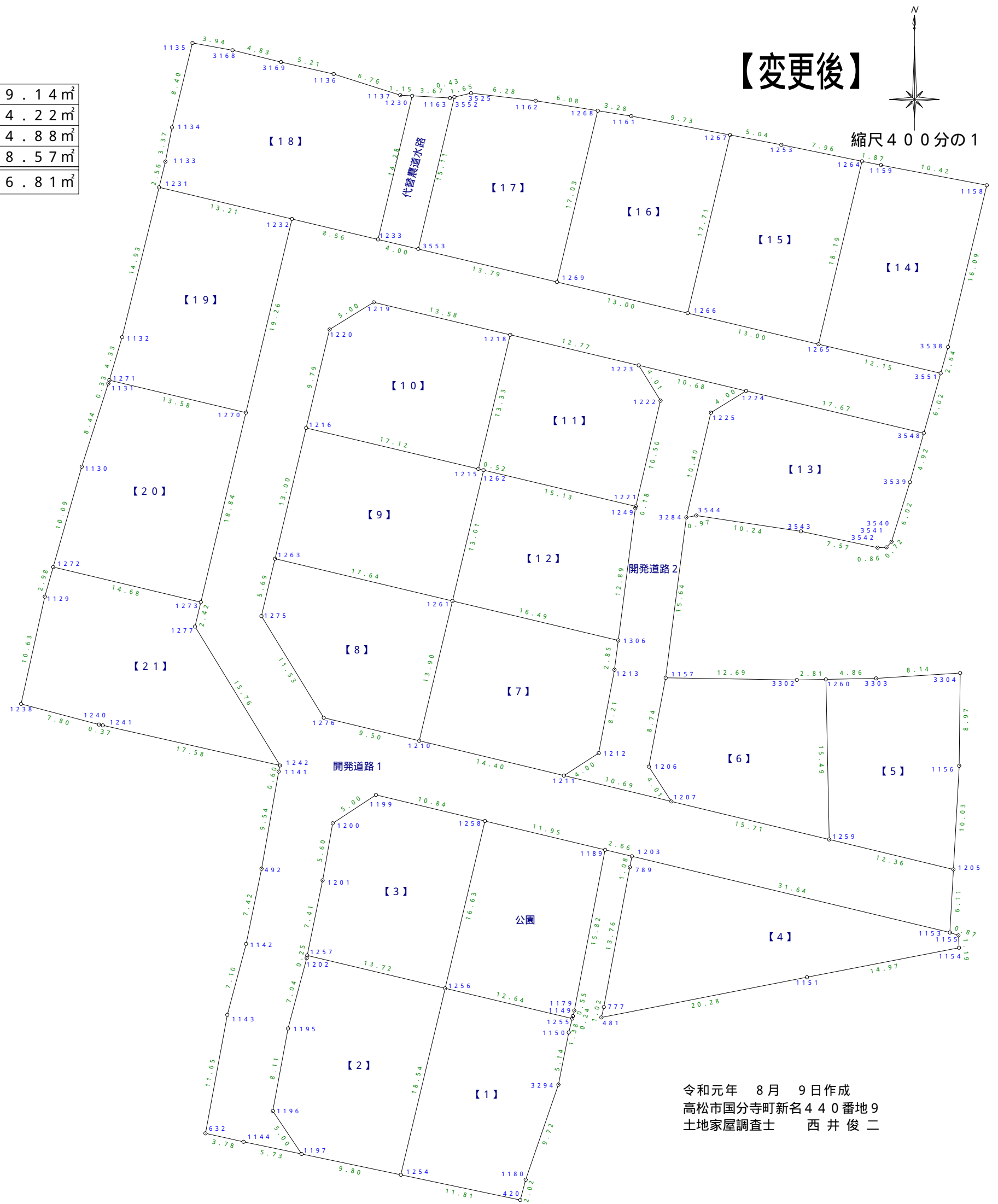
地番	【1】				
点名	X	Y	X _{n+1} - X _{n-1}	Y _n (X _{n+1} - X _{n-1})	
1254	142513.249	46095.607	-20.482	-944130.222574	
420	142510.811	46107.168	-0.478	-22039.226304	
1180	142512.771	46107.687	11.159	514515.679233	
3294	142521.970	46110.857	14.251	657125.823107	
1150	142527.022	46111.855	6.397	294977.536435	
1255	142528.367	46112.199	4.271	196945.201929	
1256	142531.293	46099.899	-15.118	-696938.273082	
倍面積				456.518744	m ²
面積				228.2593720	m ²
地積				228.25	m ²

地番	【2】				
点名	X	Y	X _{n+1} - X _{n-1}	Y _n (X _{n+1} - X _{n-1})	
1254	142513.249	46095.607	16.030	738912.580210	
1256	142531.293	46099.899	21.219	978193.756881	
1257	142534.468	46086.550	2.922	134664.899100	
1202	142534.215	46086.499	-7.062	-325462.855938	
1195	142527.406	46084.692	-14.791	-681638.679372	
1196	142519.424	46083.218	-12.143	-559588.516174	
1197	142515.263	46086.008	-6.175	-284581.099400	
倍面積				500.085307	m ²
面積				250.0426535	m ²
地積				250.04	m ²

地番	【3】				
点名	X	Y	X _{n+1} - X _{n-1}	Y _n (X _{n+1} - X _{n-1})	
1256	142531.293	46099.899	13.009	599713.586091	
1258	142547.477	46103.748	18.712	862693.332576	
1199	142550.005	46093.203	-0.220	-10140.504660	
1200	142547.257	46089.014	-8.269	-381110.056766	
1201	142541.736	46088.039	-12.789	-589419.930771	
1257	142534.468	46086.550	-10.443	-481281.841650	
倍面積				454.584820	m ²
面積				227.2924100	m ²
地積				227.29	m ²

地番	【4】				
点名	X	Y	X _{n+1} - X _{n-1}	Y _n (X _{n+1} - X _{n-1})	
1203	142544.069	46117.967	6.310	291004.371770	
789	142543.003	46117.766	-14.595	-673088.794770	
777	142529.474	46115.248	-14.528	-669962.322944	
481	142528.475	46115.015	2.894	133456.853410	
1151	142532.368	46134.918	6.744	311133.886992	
1154	142535.219	46149.624	4.048	186813.677952	
1155	142536.416	46149.569	1.474	68024.464706	
1153	142536.693	46148.737	7.653	353176.284261	
倍面積				558.421377	m ²
面積				279.2106885	m ²
地積				279.21	m ²

地番	【5】				
点名	X	Y	X _{n+1} - X _{n-1}	Y _n (X _{n+1} - X _{n-1})	
1259	142545.692	46137.058	-18.384	-848183.674272	
1205	142542.797	46149.080	7.128	328950.642240	
1156	142552.820	46149.642	18.997	876704.749074	
3304	142561.794	46149.737	8.460	390426.775020	
3303	142561.280	46141.606	-0.613	-28284.804478	
1260	142561.181	46136.741	-15.588	-719179.518708	
倍面積				434.168876	m ²
面積				217.0844380	m ²
地積				217.08	m ²



令和元年 8月 9日作成
高松市国分寺町新名440番地9
土地家屋調査士 西井俊二

丈量図 3

【変更後】

地番		開発道路1			
点名	X	Y	$X_{n+1} - X_{n-1}$	$Y_n (X_{n+1} - X_{n-1})$	
632	142517.259	46076.701	-12.284	-566006.195084	
1144	142516.441	46080.392	-1.996	-91976.462432	
1197	142515.263	46086.008	2.983	137474.561864	
1196	142519.424	46083.218	12.143	559588.516174	
1195	142527.406	46084.692	14.791	681638.679372	
1202	142534.215	46086.499	7.062	325462.855938	
1257	142534.468	46086.550	7.521	346616.942550	
1201	142541.736	46088.039	12.789	589419.930771	
1200	142547.257	46089.014	8.269	381110.056766	
1199	142550.005	46093.203	0.220	10140.504660	
1258	142547.477	46103.748	-5.315	-245041.420620	
1189	142544.690	46115.376	-3.408	-157161.201408	
1203	142544.069	46117.967	-7.997	-368805.382099	
1153	142536.693	46148.737	-1.272	-58701.193464	
1205	142542.797	46149.080	8.999	415295.570920	
1259	142545.692	46137.058	6.573	303258.882234	
1207	142549.370	46121.784	6.182	285124.868688	
1211	142551.874	46111.388	5.875	270904.404500	
1210	142555.245	46097.388	5.597	258007.080636	
1276	142557.471	46088.143	12.063	555961.269009	
1275	142567.308	46082.117	15.381	708789.041577	
1263	142572.852	46083.436	18.201	838764.618636	
1216	142585.509	46086.446	22.185	1022427.804510	
1220	142595.037	46088.713	12.155	560208.306515	
1219	142597.664	46092.979	-0.517	-23830.070143	
1218	142594.520	46106.195	-6.100	-281247.789500	
1223	142591.564	46118.624	-5.428	-250331.891072	
1224	142589.092	46129.015	-6.562	-302698.596430	
3548	142585.002	46146.209	1.704	78633.140136	
3551	142590.796	46147.844	8.606	397148.345464	
1265	142593.608	46136.023	5.821	268557.789883	
1266	142596.617	46123.371	6.019	277616.570049	
1269	142599.627	46110.719	6.203	286024.789957	
3553	142602.820	46097.295	4.119	189874.758105	
1233	142603.746	46093.403	2.907	133993.522521	
1232	142605.727	46085.073	-16.757	-772247.568261	
1270	142586.989	46080.615	-37.074	-1708392.720510	
1273	142568.653	46076.254	-20.698	-953686.305292	
1277	142566.291	46075.692	-15.802	-728088.084984	
1242	142552.851	46083.925	-14.030	-646557.467750	
1141	142552.261	46083.789	-9.988	-460284.884532	
492	142542.863	46082.130	-16.670	-768189.107100	
1142	142535.591	46080.640	-14.138	-651488.088320	
1143	142528.725	46078.819	-18.332	-844716.909908	
			倍面積	2591.472526	m ²
			面積	1295.7362630	m ²
			地積	1295.73	m ²

地番		開発道路2			
点名	X	Y	$X_{n+1} - X_{n-1}$	$Y_n (X_{n+1} - X_{n-1})$	
1225	142586.983	46125.605	12.245	564808.033225	
1224	142589.092	46129.015	4.581	211317.017715	
1223	142591.564	46118.624	-0.939	-43305.387936	
1222	142588.153	46120.733	-13.641	-629132.918853	
1221	142577.923	46118.341	-10.413	-480230.284833	
1249	142577.740	46118.299	-12.970	-598154.338030	
1306	142564.953	46116.648	-15.620	-720342.041760	
1213	142562.120	46116.282	-10.903	-502805.822646	
1212	142554.050	46114.756	-10.246	-472491.789976	
1211	142551.874	46111.388	-4.680	-215801.295840	
1207	142549.370	46121.784	0.864	39849.221376	
1206	142552.738	46119.607	11.963	551728.858541	
1157	142561.333	46121.232	24.109	1111936.782288	
3284	142576.847	46123.235	25.650	1183060.977750	
			倍面積	436.991021	m ²
			面積	218.4955105	m ²
			地積	218.49	m ²

地番		公園			
点名	X	Y	$X_{n+1} - X_{n-1}$	$Y_n (X_{n+1} - X_{n-1})$	
1258	142547.477	46103.748	-13.397	-617651.911956	
1256	142531.293	46099.899	-19.110	-880969.069890	
1255	142528.367	46112.199	-2.688	-123949.590912	
1149	142528.605	46112.260	0.777	35829.226020	
1179	142529.144	46112.398	16.085	741717.921830	
1189	142544.690	46115.376	18.333	845433.188208	
			倍面積	409.763300	m ²
			面積	204.8816500	m ²
			地積	204.88	m ²

地番		代替農道水路			
点名	X	Y	$X_{n+1} - X_{n-1}$	$Y_n (X_{n+1} - X_{n-1})$	
1230	142617.639	46096.708	-13.681	-630649.062148	
1233	142603.746	46093.403	-14.819	-683058.139057	
3553	142602.820	46097.295	13.778	635128.530510	
3552	142617.524	46100.792	14.607	673394.268744	
1163	142617.427	46100.372	0.115	5301.542780	
			倍面積	117.140829	m ²
			面積	58.5704145	m ²
			地積	58.57	m ²