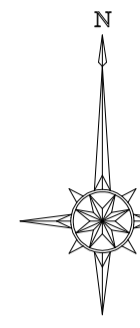


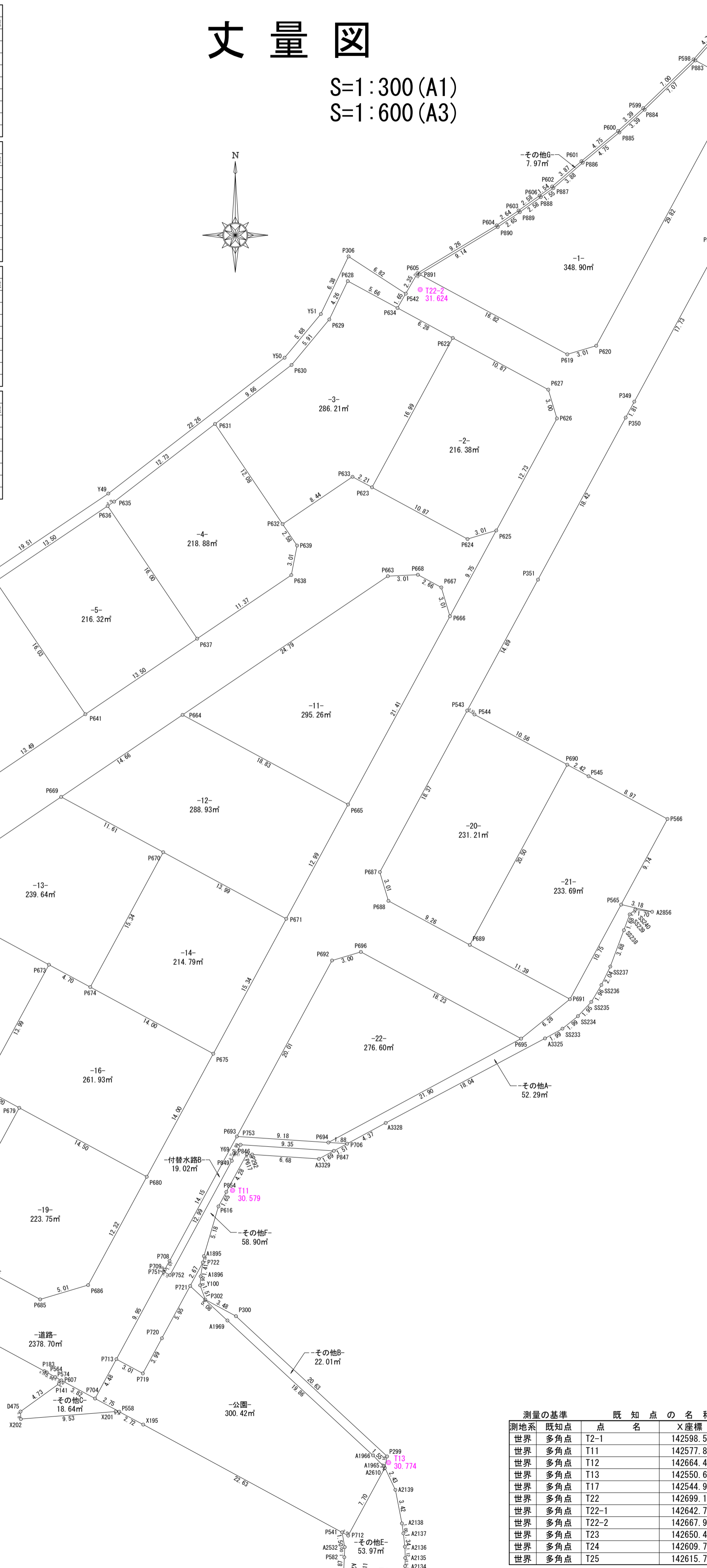
丈量図

S=1:300 (A1)
S=1:600 (A3)



| 地番 | X座標 | Y座標 | 点間距離 |
|------|-------------|-----------|-------|
| P883 | 142690.893 | 41701.537 | 7.07 |
| P884 | 142685.969 | 41716.456 | 3.39 |
| P885 | 142680.660 | 41714.038 | 4.75 |
| P886 | 142680.663 | 41710.366 | 3.88 |
| P887 | 142678.122 | 41707.430 | 1.55 |
| P888 | 142677.214 | 41706.166 | 2.58 |
| P889 | 142675.709 | 41704.065 | 2.65 |
| P890 | 142674.227 | 41701.859 | 9.14 |
| P891 | 142669.497 | 41694.029 | 16.82 |
| P892 | 142662.552 | 41711.719 | 29.82 |
| P893 | 142668.580 | 41725.911 | 4.85 |
| 倍面積 | 697.8100660 | | |
| 面積 | 348.9053030 | | |
| 地積 | 348.90 | | |

| 地番 | X座標 | Y座標 | 点間距離 |
|------|-------------|-----------|-------|
| P629 | 142668.820 | 41696.854 | 4.26 |
| P630 | 142664.980 | 41695.006 | 5.91 |
| P631 | 142660.428 | 41691.225 | 9.66 |
| P632 | 142654.528 | 41673.566 | 12.08 |
| P633 | 142649.514 | 41680.329 | 8.44 |
| P634 | 142649.241 | 41687.228 | 2.21 |
| P635 | 142648.188 | 41689.233 | 16.89 |
| P636 | 142653.134 | 41697.351 | 6.26 |
| P637 | 142666.126 | 41691.833 | 5.66 |
| 倍面積 | 572.4393400 | | |
| 面積 | 286.2197170 | | |
| 地積 | 286.21 | | |



| 地番 | X座標 | Y座標 | 点間距離 |
|------|------------|-----------|-------|
| P613 | 142655.166 | 41724.794 | 0.72 |
| P614 | 142694.463 | 41725.150 | 4.22 |
| P615 | 142690.696 | 41727.056 | 2.40 |
| P616 | 142688.580 | 41725.911 | 2.82 |
| P617 | 142662.552 | 41711.719 | 3.01 |
| P618 | 142661.490 | 41708.825 | 17.05 |
| P619 | 142669.607 | 41693.825 | 2.35 |
| P620 | 142666.126 | 41691.833 | 6.26 |
| P621 | 142662.552 | 41697.261 | 10.87 |
| P622 | 142662.552 | 41697.261 | 10.87 |
| P623 | 142662.552 | 41697.261 | 10.87 |
| P624 | 142662.552 | 41697.261 | 10.87 |
| P625 | 142662.552 | 41697.261 | 10.87 |
| P626 | 142662.552 | 41697.261 | 10.87 |
| P627 | 142662.552 | 41697.261 | 10.87 |
| P628 | 142662.552 | 41697.261 | 10.87 |
| P629 | 142662.552 | 41697.261 | 10.87 |
| P630 | 142662.552 | 41697.261 | 10.87 |
| P631 | 142662.552 | 41697.261 | 10.87 |
| P632 | 142662.552 | 41697.261 | 10.87 |
| P633 | 142662.552 | 41697.261 | 10.87 |
| P634 | 142662.552 | 41697.261 | 10.87 |
| P635 | 142662.552 | 41697.261 | 10.87 |
| P636 | 142662.552 | 41697.261 | 10.87 |
| P637 | 142662.552 | 41697.261 | 10.87 |
| P638 | 142662.552 | 41697.261 | 10.87 |
| P639 | 142662.552 | 41697.261 | 10.87 |
| P640 | 142662.552 | 41697.261 | 10.87 |
| P641 | 142662.552 | 41697.261 | 10.87 |
| P642 | 142662.552 | 41697.261 | 10.87 |
| P643 | 142662.552 | 41697.261 | 10.87 |
| P644 | 142662.552 | 41697.261 | 10.87 |
| P645 | 142662.552 | 41697.261 | 10.87 |
| P646 | 142662.552 | 41697.261 | 10.87 |
| P647 | 142662.552 | 41697.261 | 10.87 |
| P648 | 142662.552 | 41697.261 | 10.87 |
| P649 | 142662.552 | 41697.261 | 10.87 |
| P650 | 142662.552 | 41697.261 | 10.87 |
| P651 | 142662.552 | 41697.261 | 10.87 |
| P652 | 142662.552 | 41697.261 | 10.87 |
| P653 | 142662.552 | 41697.261 | 10.87 |
| P654 | 142662.552 | 41697.261 | 10.87 |
| P655 | 142662.552 | 41697.261 | 10.87 |
| P656 | 142662.552 | 41697.261 | 10.87 |
| P657 | 142662.552 | 41697.261 | 10.87 |
| P658 | 142662.552 | 41697.261 | 10.87 |
| P659 | 142662.552 | 41697.261 | 10.87 |
| P660 | 142662.552 | 41697.261 | 10.87 |
| P661 | 142662.552 | 41697.261 | 10.87 |
| P662 | 142662.552 | 41697.261 | 10.87 |
| P663 | 142662.552 | 41697.261 | 10.87 |
| P664 | 142662.552 | 41697.261 | 10.87 |
| P665 | 142662.552 | 41697.261 | 10.87 |
| P666 | 142662.552 | 41697.261 | 10.87 |
| P667 | 142662.552 | 41697.261 | 10.87 |
| P668 | 142662.552 | 41697.261 | 10.87 |
| P669 | 142662.552 | 41697.261 | 10.87 |
| P670 | 142662.552 | 41697.261 | 10.87 |
| P671 | 142662.552 | 41697.261 | 10.87 |
| P672 | 142662.552 | 41697.261 | 10.87 |
| P673 | 142662.552 | 41697.261 | 10.87 |
| P674 | 142662.552 | 41697.261 | 10.87 |
| P675 | 142662.552 | 41697.261 | 10.87 |
| P676 | 142662.552 | 41697.261 | 10.87 |
| P677 | 142662.552 | 41697.261 | 10.87 |
| P678 | 142662.552 | 41697.261 | 10.87 |
| P679 | 142662.552 | 41697.261 | 10.87 |
| P680 | 142662.552 | 41697.261 | 10.87 |
| P681 | 142662.552 | 41697.261 | 10.87 |
| P682 | 142662.552 | 41697.261 | 10.87 |
| P683 | 142662.552 | 41697.261 | 10.87 |
| P684 | 142662.552 | 41697.261 | 10.87 |
| P685 | 142662.552 | 41697.261 | 10.87 |
| P686 | 142662.552 | 41697.261 | 10.87 |
| P687 | 142662.552 | 41697.261 | 10.87 |
| P688 | 142662.552 | 41697.261 | 10.87 |
| P689 | 142662.552 | 41697.261 | 10.87 |
| P690 | 142662.552 | 41697.261 | 10.87 |
| P691 | 142662.552 | 41697.261 | 10.87 |
| P692 | 142662.552 | 41697.261 | 10.87 |
| P693 | 142662.552 | 41697.261 | 10.87 |
| P694 | 142662.552 | 41697.261 | 10.87 |
| P695 | 142662.552 | 41697.261 | 10.87 |
| P696 | 142662.552 | 41697.261 | 10.87 |
| P697 | 142662.552 | 41697.261 | 10.87 |
| P698 | 142662.552 | 41697.261 | 10.87 |
| P699 | 142662.552 | 41697.261 | 10.87 |
| P700 | 142662.552 | 41697.261 | 10.87 |
| P701 | 142662.552 | 41697.261 | 10.87 |
| P702 | 142662.552 | 41697.261 | 10.87 |
| P703 | 142662.552 | 41697.261 | 10.87 |
| P704 | 142662.552 | 41697.261 | 10.87 |
| P705 | 142662.552 | 41697.261 | 10.87 |
| P706 | 142662.552 | 41697.261 | 10.87 |
| P707 | 142662.552 | 41697.261 | 10.87 |
| P708 | 142662.552 | 41697.261 | 10.87 |
| P709 | 142662.552 | 41697.261 | 10.87 |
| P710 | 142662.552 | 41697.261 | 10.87 |
| P711 | 142662.552 | 41697.261 | 10.87 |
| P712 | 142662.552 | 41697.261 | 10.87 |
| P713 | 142662.552 | 41697.261 | 10.87 |
| P714 | 142662.552 | 41697.261 | 10.87 |
| P715 | 142662.552 | 41697.261 | 10.87 |
| P716 | 142662.552 | 41697.261 | 10.87 |
| P717 | 142662.552 | 41697.261 | 10.87 |
| P718 | 142662.552 | 41697.261 | 10.87 |
| P719 | 142662.552 | 41697.261 | 10.87 |
| P720 | 142662.552 | 41697.261 | 10.87 |
| P721 | 142662.552 | 41697.261 | 10.87 |
| P722 | 142662.552 | 41697.261 | 10.87 |
| P723 | 142662.552 | 41697.261 | 10.87 |
| P724 | 142662.552 | 41697.261 | 10.87 |
| P725 | 142662.552 | 41697.261 | 10.87 |
| P726 | 142662.552 | 41697.261 | 10.87 |
| P727 | 142662.552 | 41697.261 | 10.87 |
| P728 | 142662.552 | 41697.261 | 10.87 |
| P729 | 142662.552 | 41697.261 | 10.87 |
| P730 | 142662.552 | 41697.261 | 10.87 |
| P731 | 142662.552 | 41697.261 | 10.87 |
| P732 | 142662.552 | 41697.261 | 10.87 |
| P733 | 142662.552 | 41697.261 | 10.87 |
| P734 | 142662.552 | 41697.261 | 10.87 |
| P735 | 142662.552 | 41697.261 | 10.87 |
| P736 | 142662.552 | 41697.261 | 10.87 |
| P737 | 142662.552 | 41697.261 | 10.87 |
| P738 | 142662.552 | 41697.261 | 10.87 |
| P739 | 142662.552 | 41697.261 | 10.87 |
| P740 | 142662.552 | 41697.261 | 10.87 |
| P741 | 142662.552 | 41697.261 | 10.87 |
| P742 | 142662.552 | 41697.261 | 10.87 |
| P743 | 142662.552 | 41697.261 | 10.87 |
| P744 | 142662.552 | 41697.261 | 10.87 |
| P745 | 142662.552 | 41697.261 | 10.87 |
| P746 | 142662.552 | 41697.261 | 10.87 |
| P747 | 142662.552 | 41697.261 | 10.87 |
| P748 | 142662.552 | 41697.261 | 10.87 |
| P749 | 142662.552 | 41697.261 | 10.87 |
| P750 | 142662.552 | 41697.261 | 10.87 |
| P751 | 142662.552 | 41697.261 | 10.87 |
| P752 | 142662.552 | 41697.261 | 10.87 |
| P753 | 142662.552 | 41697.261 | 10.87 |
| P754 | 142662.552 | 41697.261 | 10.87 |
| P755 | 142662.552 | 41697.261 | 10.87 |
| P756 | 142662.552 | 41697.261 | 10.87 |
| P757 | 142662.552 | 41697.261 | 10.87 |
| P758 | 142662.552 | 41697.261 | 10.87 |
| P759 | 142662.552 | 41697.261 | 10.87 |
| P760 | 142662.552 | 41697.261 | 10.87 |
| P761 | 142662.552 | 41697.261 | 10.87 |
| P762 | 142662.552 | 41697.261 | 10.87 |
| P763 | 142662.552 | 41697.261 | 10.87 |
| P764 | 142662.552 | 41697.261 | 10.87 |
| P765 | 142662.552 | 41697.261 | 10.87 |
| P766 | 142662.552 | 41697.261 | 10.87 |
| P767 | 142662.552 | 41697.261 | 10.87 |
| P768 | 142662.552 | 41697.261 | 10.87 |
| P769 | 142662.552 | 41697.261 | 10.87 |
| P770 | 142662.552 | 41697.261 | 10.87 |
| P771 | 142662.552 | 41697.261 | 10.87 |
| P772 | 142662.552 | 41697.261 | 10.87 |
| P773 | 142662.552 | 41697.261 | 10.87 |
| P774 | 142662.552 | 41697.261 | 10.87 |
| P775 | 142662.552 | 41697.261 | 10.87 |
| P776 | 142662.552 | 41697.261 | 10.87 |
| P777 | 142662.552 | 41697.261 | 10.87 |
| P778 | 142662.552 | 41697.261 | 10.87 |
| P779 | 142662.552 | 41697.261 | 10.87 |
| P780 | 142662.552 | 41697.261 | 10.87 |
| P781 | 142662.552 | 41697.261 | 10.87 |
| P782 | 142662.552 | 41697.261 | 10.87 |
| P783 | 142662.552 | 41697.261 | 10.87 |
| P784 | 142662.552 | 41697.261 | 10.87 |
| P785 | 142662.552 | 41697.261 | 10.87 |
| P786 | 142662.552 | 41697.261 | 10.87 |
| P787 | 142662.552 | 41697.261 | 10.87 |
| P788 | 142662.552 | 41697.261 | 10.87 |
| P789 | 142662.552 | 41697.261 | 10.87 |
| P790 | 142662.552 | 41697.261 | 10.87 |
| P791 | 142662.552 | 41697.261 | 10.87 |
| P792 | 142662.552 | 41697.261 | 10.87 |
| P793 | 142662.552 | 41697.261 | 10.87 |
| P794 | 142662.552 | 41697.261 | 10.87 |
| P795 | 142662.552 | 41697.261 | 10.87 |
| P796 | 142662.552 | 41697.261 | 10.87 |
| P797 | 142662.552 | 41697.261 | 10.87 |
| P798 | 142662.552 | 41697.261 | 10.87 |
| P799 | 142662.552 | 41697.261 | 10.87 |
| P800 | 142662.552 | 41697.261 | 10.87 |

| 区分 | 面積 | 単位 |
|------|---------|----|
| 宅地 | 552.98 | ㎡ |
| 道路 | 2378.70 | ㎡ |
| 公園 | 300.42 | ㎡ |
| 付替水路 | 49.63 | ㎡ |
| その他 | 359.25 | ㎡ |
| 合計 | 8610.98 | ㎡ |

| | |
|-------|--|
| 所在 | 高松市国分寺町柏原白地 |
| 図面名 | 丈量図 |
| 縮尺 | 図中記載 |
| 図面番号 | |
| 作成年月日 | 平成 30 年 1 月 26 日 |
| 作成者 | 高松市三条町278番地12 株式会社高松合同企画 土地家屋調査士・測量士 野田 明良 |